



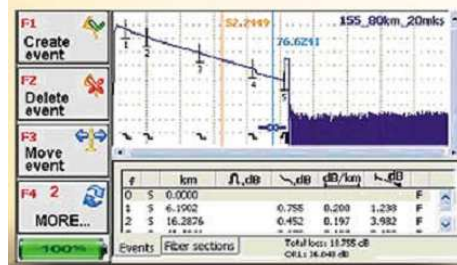
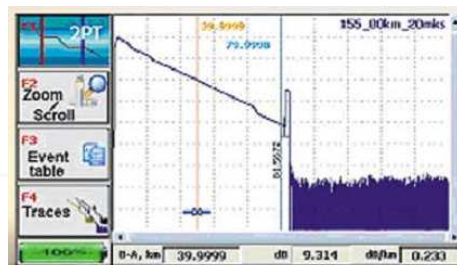
KI 6700 series handheld OTDR is the reliable and compact tool for fiber optic measurements at any stage of optical network development: from building and installation to their active operation.

OPTICAL COMMUNICATION TESTING APPLICATIONS

- Length measurement
- Tier 2 testing
- Splice loss verification
- As built network verification
- Active Network/PON testing option
- SMF, MMF and FTTH applications

FEATURES

- Functions as OTDR and Laser source
- Multiple wavelength testing
- SMF Dynamic range: 31 dB to 34 dB
- MMF Dynamic range 28 to 30 dB
- Min SMF OTDR attenuation/event dead zone is 4.5/1.2 m
- Belcore/Telcordia GR-196 SOR type 1, 1.1 & 2 format compliance.
- Bright high contrast 4.3" TFT screen
- USB-B port for external devices connection
- USB-A port for flash memory stick
- Small size and weight (1.3 kg with the battery)
- 5 hours operation with internal Ni-MH battery
- Rugged metal case with protective silicone overlays
- Advanced and automatic measurement modes cater for the experienced and beginner user
- Up to 500 traces for the internal memory
- 2 year warranty



2 YEAR WARRANTY



KI 6700 SERIES

Handheld Optical Time Domain Reflectometer

GENERAL SPECIFICATIONS

| | |
|-----------------------|--|
| Display | 4.3" TFT 16bit colour |
| Memory | 1) 1 GB internal memory 2) USB flash memory stick |
| Connection with PC | USB |
| Power supply | Internal NiMh battery (5 hr) or AC/DC adapter |
| Weight | 1.3 kg with internal batteries |
| Dimensions | 214 × 137 × 35 mm |
| Operating temperature | -15 to 50°C |
| Storage temperature | -25 to 55°C |

OTDR SPECIFICATIONS

| | |
|-----------------------------------|---|
| Attenuation resolution | 0.001 dB |
| Distance measurement accuracy | ± (0.5 + resolution + 5 × 10 ⁻⁵ × L) m |
| Attenuation measurement linearity | 0.04 dB/dB |
| Sampling resolution | 0.16 ... 7.6 m |
| Sampling points | up to 64,000 |
| Optical connector | Select one connector type from SC, FC, ST |

SMF OTDR SPECIFICATIONS

| | |
|------------------------------------|--|
| Wavelength | 1310, 1550, 1625 ± 20 nm |
| Dynamic range (SNR = 1) | 1310 nm: 34 dB 1550 nm: 32 dB 1625 nm: 31 dB |
| Attenuation dead zone ¹ | 4.5 m |
| Event dead zone ¹ | 1.2 m |
| Pulse width | 6, 12, 25, 100, 300, 1000, 3000, 10000 ns |
| Distance range | 2, 5, 10, 20, 40, 80, 120, 160, 240 km |

MMF OTDR SPECIFICATIONS

| | |
|------------------------------------|---|
| Wavelength | 850, 1300 ± 20 nm |
| Core diameter | 50 µm |
| Dynamic range (SNR = 1) | 850 nm @ 50 µm: 28 dB 1300 nm @ 50 µm: 30 dB |
| Attenuation dead zone ¹ | 4.5 m |
| Event dead zone ¹ | 1.2 m |
| Pulse width | 6, 12, 25, 100, 300, 1000 ns |
| Distance range | 2, 5, 10, 20, 40, 80 km |

SMF LASER SOURCE SPECIFICATIONS

| | |
|-----------------------|--------------------------|
| Wavelength | 1310, 1550, 1625 ± 20 nm |
| Output power | > -10 dBm |
| Power level stability | < 0.01 (15 min) |
| Operating mode | CW & 2 kHz |

¹ at min pulse width and reflectance of -40 dB.

ORDERING INFORMATION

| Instrument | P/N |
|--|---------|
| Instrument, OTDR SMF 1310/1550 nm | KI 6701 |
| Instrument, OTDR SMF 1310/1550/1625 nm (filtered) | KI 6702 |
| Instrument, OTDR 50µm MMF 850/1300 nm & SMF 1310/1550 nm | KI 6703 |

Please select connector type from SC, FC, ST or other types.

STANDARD ACCESSORIES

| Description | Quantity |
|----------------------------------|----------|
| Soft carry bag | 1 |
| Instruction manual | 1 |
| Cable, USB | 1 |
| CD with OTDR processing software | 1 |
| External power supply | 1 |

Technical data is subject to change without notice as part of our program of continuous improvements.

AUTHORIZED DEALER



Kingfisher International Pty Ltd
30 Rocco Drive, Scoresby VIC 3179 Australia

T +61 3 9757 4100
F +61 3 9757 4193
E sales@kingfisher.com.au

FTTx TELCO / CATV LAN / WAN DEFENCE EDUCATION AUTOMOTIVE